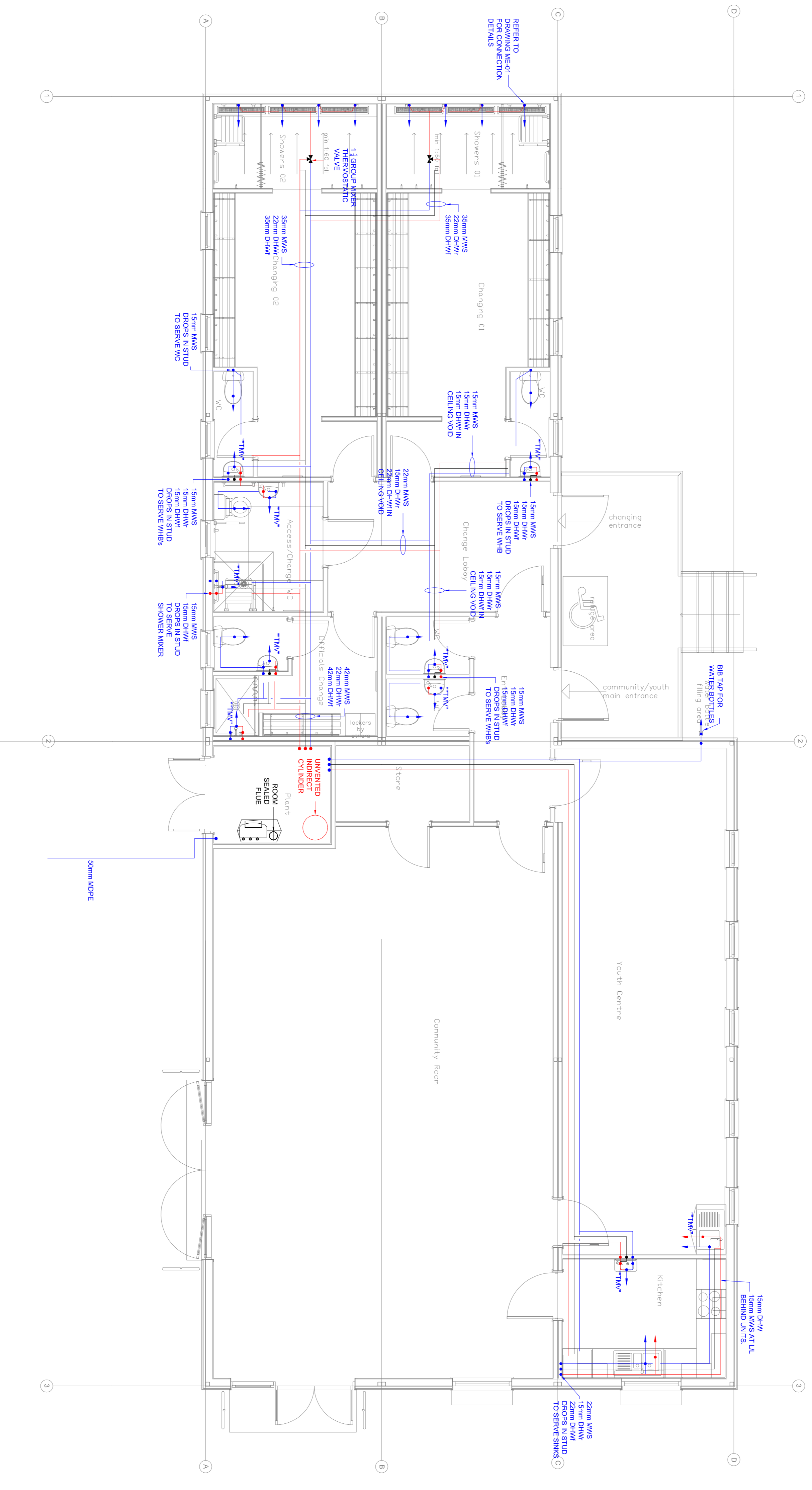


NOTES

DOMESTIC INSTALLATION NOTES

1. ALL ITEMS OF SANITARY WARE, ETC. SHALL BE PROVIDED WITH A 'BALLOON' TYPE ISOLATING VALVE ON EACH WATER CONNECTION.
2. PLUMBING INSTALLATION SHALL COMPLY WITH THE WATER REGULATIONS.
3. THE ROUTE OF PIPEWORK SHALL BE CO-ORDINATED IN CONJUNCTION WITH ALL OTHER MECHANICAL AND ELECTRICAL SERVICES AND THE BUILDING STRUCTURE.
4. PLUMBING PIPEWORK SHALL BE CARRIED OUT USING X. ALL EXPOSED PIPEWORK SHALL BE CHROME PLATED WITH THE SPECIFICATION.
5. ALL PIPEWORK SHALL BE INSULATED IN ACCORDANCE WITH THE SPECIFICATION.
6. AFTER THE INSTALLATION IS COMPLETED THE ENTIRE WATER INSTALLATION SHALL BE FLUSHED OUT AND DISINFECTED IN ACCORDANCE ACPF L8 & BS9700.
7. DENOTES WASH HAND BASINS WITH A THERMOSTATIC MIXING VALVE WITH A TACTORY SET BLEND WATER TEMPERATURE OF 41 °C. SEE DETAIL.



3	PRELIMINARY	13/11/14	CWB	CA
2	PRELIMINARY	08/11/14	CWB	CA
1	FOR APPROVAL	17/10/14	CWB	CA
0	PRELIMINARY	05/10/14	CWB	CA
REV./AMENDMENTS	DATE	BY	CHK	BY

Head Office
76 Ballyvaughan
Douglas
County Tyrone
BT71 6HD
Tel: +44 (0)28 8724 8172
Fax: +44 (0)28 8724 8173
www.mcavoy.com

Working with:
CWB Consulting
Mechanical & Electrical Engineers
5-7
5-7
www.cwbconsulting.com

Client:
Starcross Parish Council Pavilion & Community Hall

Project:
Starcross Pavilion

Project No.:
CL141001

Drawing No.:
DWG-MCA-CL141001-M-02

Status:
PRELIMINARY

Drawing Title:
PLUMBING INSTALLATION

Drawn By	Checked By	DATE	SCALE
CWB	CA	SEPT'14	1:50